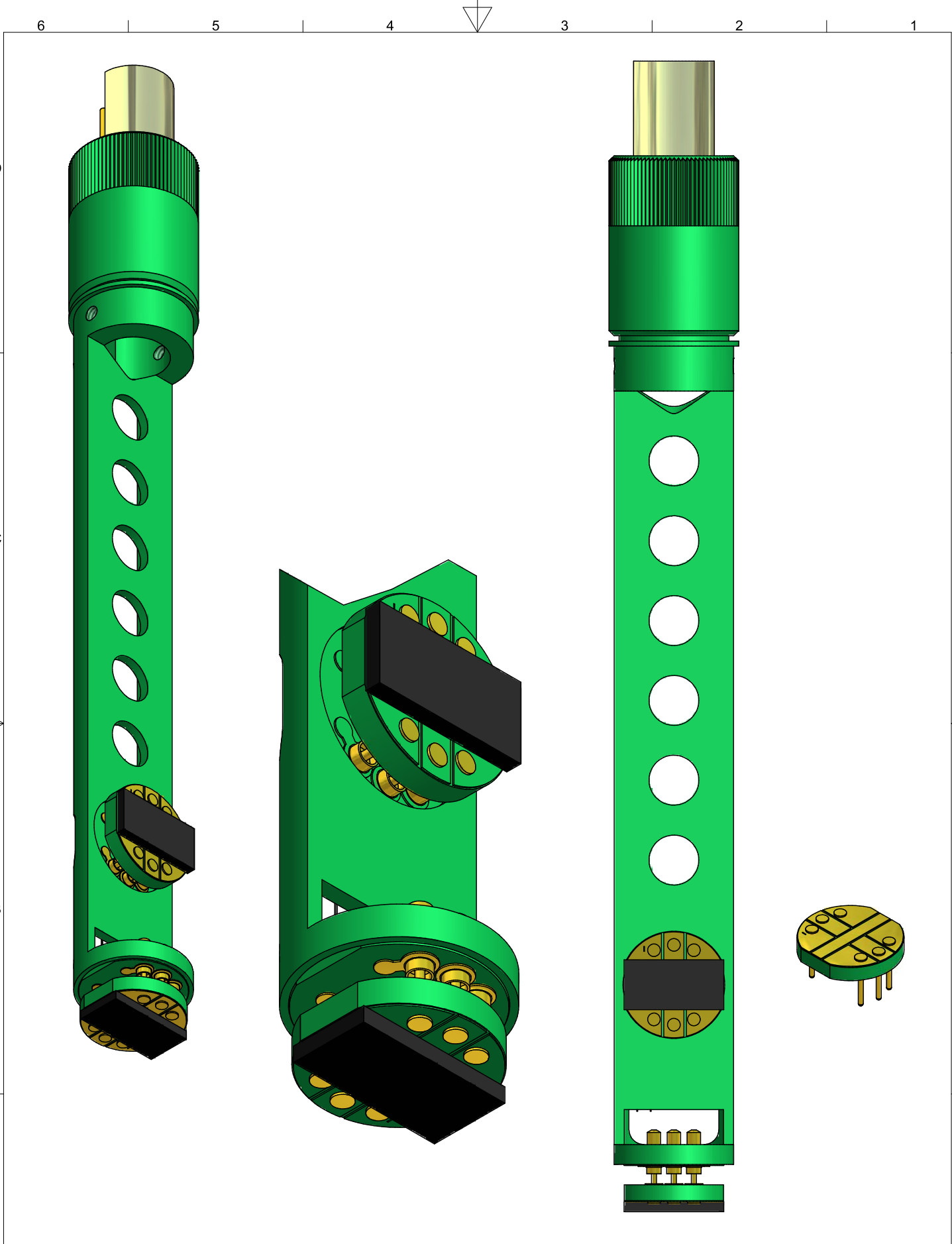


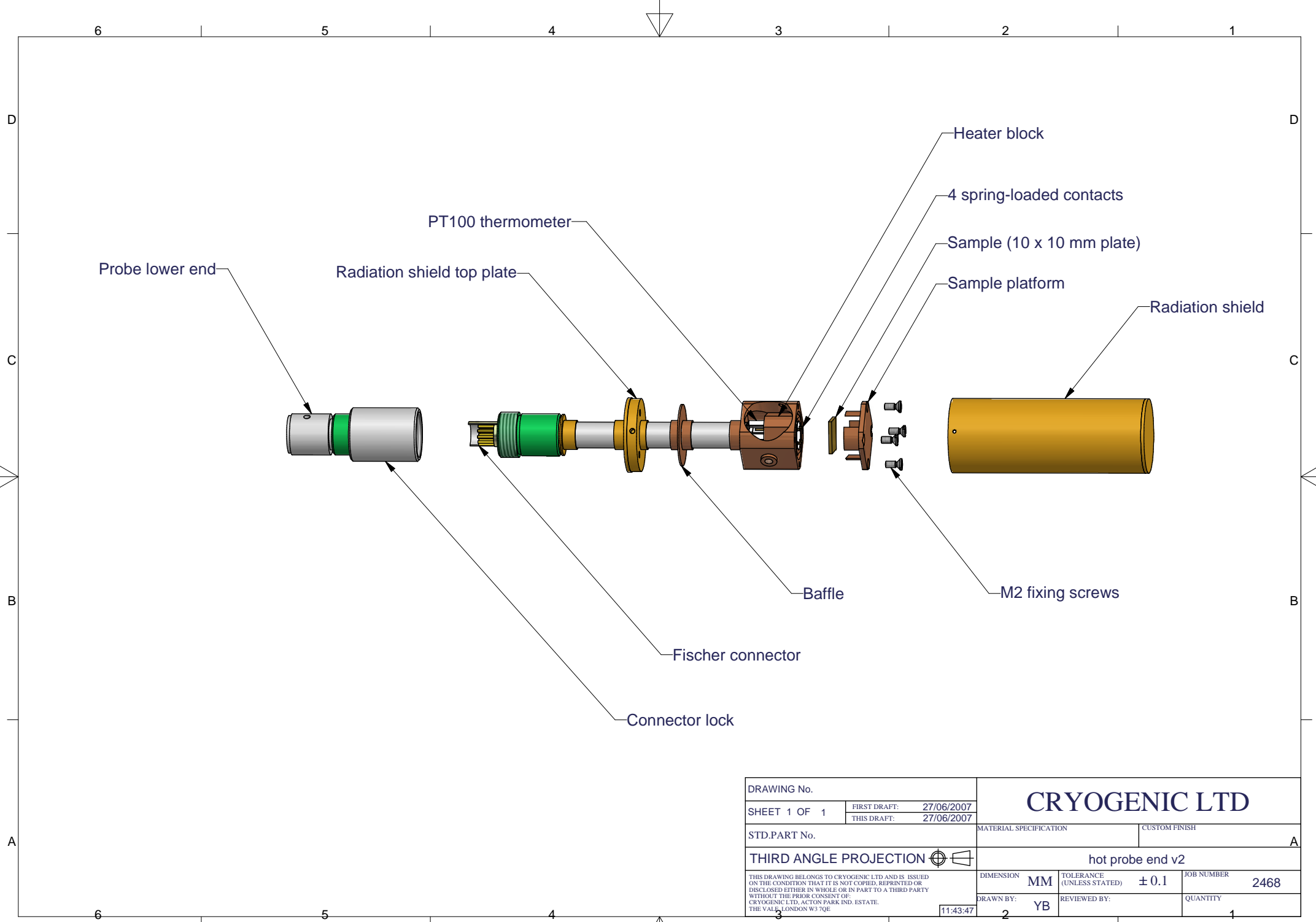
DRAWING No. CS_BHA02		CRYOGENIC LTD	
SHEET 1 OF 1	FIRST DRAFT: 29/10/2008 THIS DRAFT: 19/08/2009		
STD.PART No.		MATERIAL SPECIFICATION	CUSTOM FINISH
THIRD ANGLE PROJECTION		Probe end assembly Owen	
<small>THIS DRAWING BELONGS TO CRYOGENIC LTD AND IS ISSUED ON THE CONDITION THAT IT IS NOT COPIED, REPRINTED OR DISCLOSED EITHER IN WHOLE OR IN PART TO A THIRD PARTY WITHOUT THE PRIOR CONSENT OF: CRYOGENIC LTD, ACTON PARK IND. ESTATE, THE VALE, LONDON W3 7QE</small>		DIMENSION	TOLERANCE (UNLESS STATED) ± 0.1
		MM	JOB NUMBER
DRAWN BY: OJT		REVIEWED BY:	QUANTITY

12:42:19



DRAWING No. CS_BGA01		CRYOGENIC LTD	
SHEET 1 OF 1	FIRST DRAFT: 29/10/2008 THIS DRAFT: 20/08/2009		
STD.PART No.		MATERIAL SPECIFICATION	CUSTOM FINISH
THIRD ANGLE PROJECTION		Probe end assembly	
<small>THIS DRAWING BELONGS TO CRYOGENIC LTD AND IS ISSUED ON THE CONDITION THAT IT IS NOT COPIED, REPRINTED OR DISCLOSED EITHER IN WHOLE OR IN PART TO A THIRD PARTY WITHOUT THE PRIOR CONSENT OF CRYOGENIC LTD, ACTON PARK IND. ESTATE, THE VALE, LONDON W3 7QE</small>		DIMENSION MM	TOLERANCE (UNLESS STATED) ± 0.1
		JOB NUMBER 1065	QUANTITY 1
DRAWN BY: OJT		REVIEWED BY:	

10:35:21



DRAWING No.		CRYOGENIC LTD	
SHEET 1 OF 1	FIRST DRAFT: 27/06/2007 THIS DRAFT: 27/06/2007		
STD.PART No.		MATERIAL SPECIFICATION	CUSTOM FINISH
THIRD ANGLE PROJECTION		hot probe end v2	
<small>THIS DRAWING BELONGS TO CRYOGENIC LTD AND IS ISSUED ON THE CONDITION THAT IT IS NOT COPIED, REPRINTED OR DISCLOSED EITHER IN WHOLE OR IN PART TO A THIRD PARTY WITHOUT THE PRIOR CONSENT OF: CRYOGENIC LTD, ACTON PARK IND. ESTATE, THE VALLEY LONDON W3 7QE</small>		DIMENSION	TOLERANCE (UNLESS STATED) ± 0.1
		JOB NUMBER	2468
DRAWN BY: YB		REVIEWED BY:	QUANTITY
11:43:47		2	1

