

**14 Tesla Cryogen-Free Measurement System**  
**for Precision Measurement of Physical Properties**

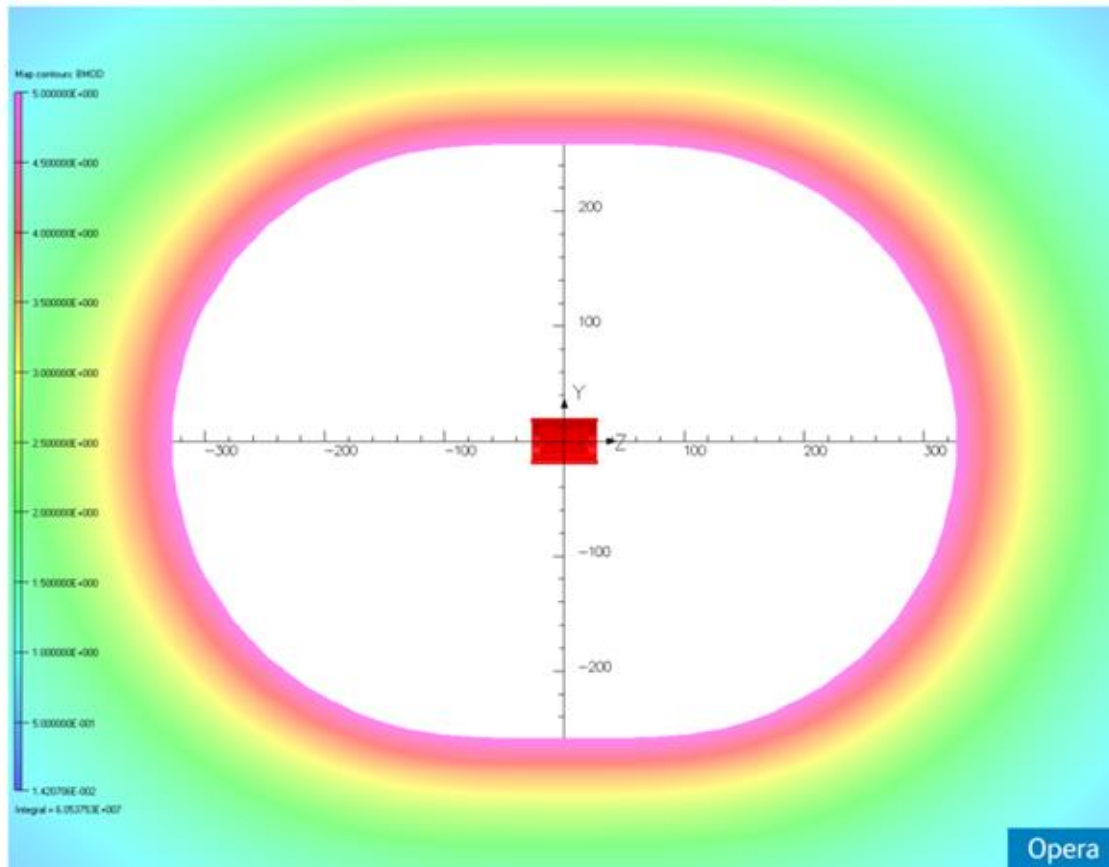
***CFMS Cryogenic System Specification***

Maximum Magnetic field Range	14 tesla
Central field homogeneity	1 % over 1 cm x Ø 1 cm cylinder at field centre
Persistent mode decay rate	10 ppm/hr

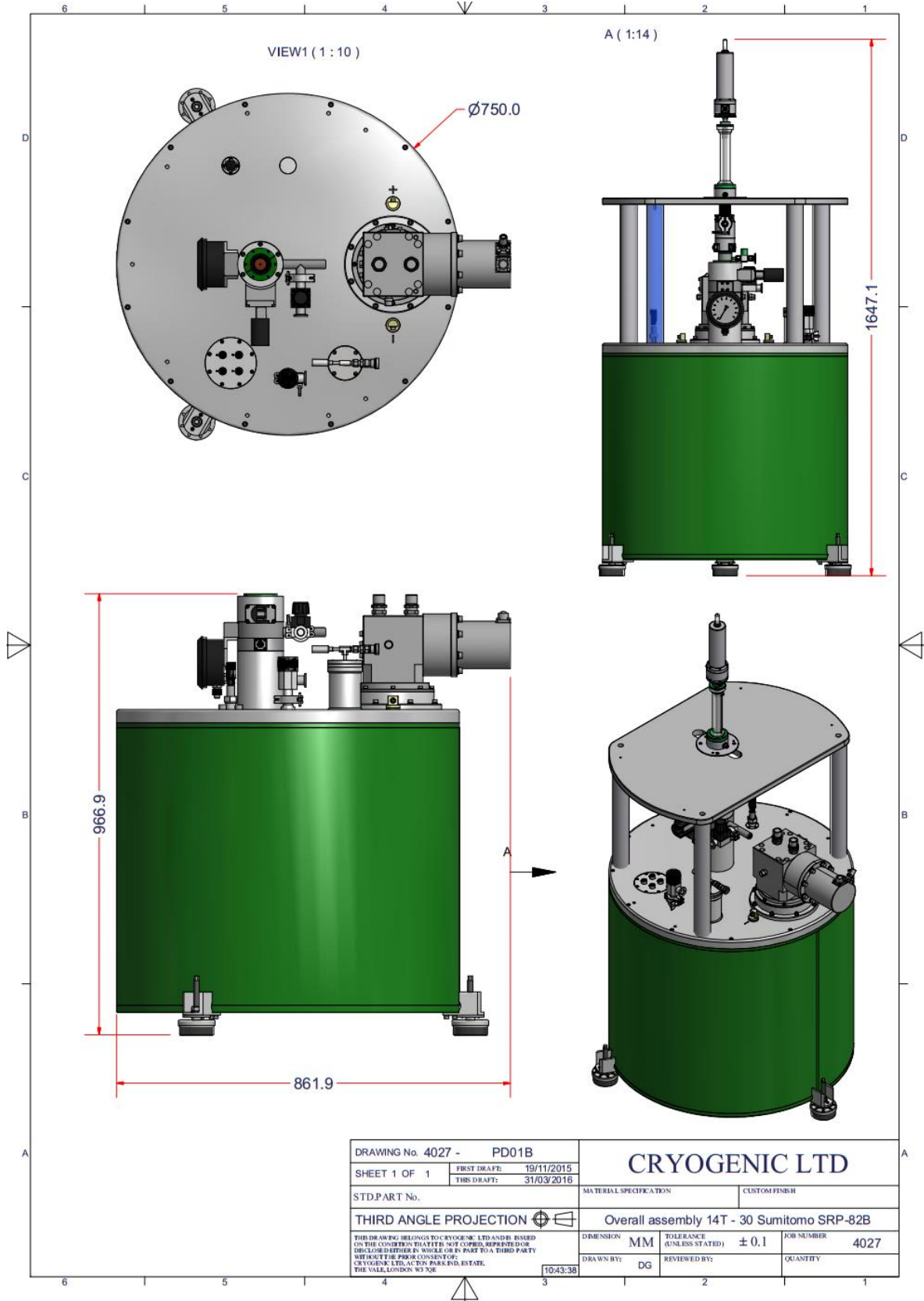
***CFMS Integrated Variable Temperature Insert***

Sample Space	30 mm	
Temperature range (with continuous gas flow in VTI)	1.6 K to 400 K extended	
Temperature control: (with Lakeshore series unit)	5 mK @ 10 K 10 mK @ 100 K 50 mK @ 300 K	
Typical sample cool-down time to 1.6 K	60 minutes	
Temperature stabilisation time for a typical 5 K temperature step and 0.1 K accuracy.	Accuracy:	Set time:
	1 – 70 K	1 minute
	70 – 200 K	10 minutes
	200 – 400 K	15 minutes

***CFMS Magnetic Field Specifications (14T) – 5 Gauss Line***



## 14 TESLA CFMS ASSEMBLY DRAWING 1



Please [contact Cryogenic](http://www.cryogenic.co.uk) for further details and pricing